

# BAE SYSTEMS Command and Control System (SPIDER) for Homeland Security

BAE Systems Integrated System Technologies (Insyte) has produced its latest generation command and control system for use in the Homeland Security arena.

At the core of Insyte's solution is a highly flexible C2 system that integrates a wide range of sensor and surveillance systems, into a common and easy to understand tactical picture.

The C2 system has been designed to use the latest developments in sensor technologies and can be easily integrated into existing communication and sensor networks, optimising existing assets in a cost effective manner.

The system offers continuous monitoring and uses sophisticated threat detection and behaviour monitoring to allow rapid decision-making and better co-ordination of responses to identified threats.



Today's security climate demands continuous vigilance to effectively guard assets against the possibility of attack. Borders require monitoring to prevent unauthorised access. To achieve this within demanding budget constraints and with reasonable manning levels, a different approach to conventional methods of integrating traditional C2 systems is required. Insyte has designed and built a new C2 system that addresses existing customer needs but is flexible enough to incorporate developing user requirements, changes to organisation and doctrine.

The Insyte solution is specifically designed to minimize the time between an event occurring and its identification by the appropriate command body. Increasing the speed that information is collected and acted upon reduces response times in dealing with the threat.

This is provided by:

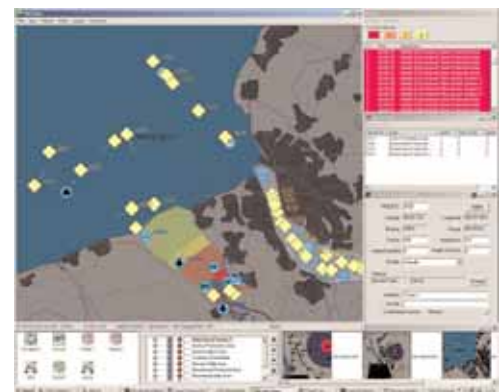
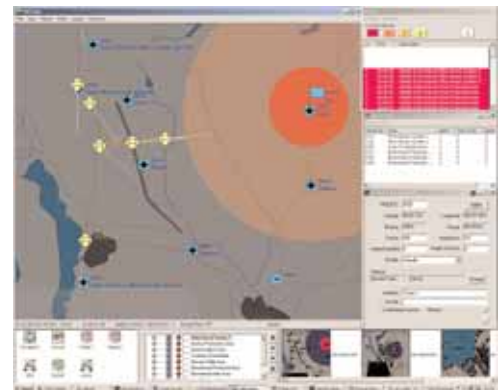
- Automated surveillance, differentiating between background activity and potential threats
- Detection, identification and prioritisation of potential threats
- Tailored rules of engagement

## FEATURES

- Complete situational awareness
- Fully configurable to any location and application
- All weather / day and night capability
- Scalable - area coverage as small or large as required
- Sophisticated C2 software
- Radar, EO and IR sensor technology
- Mobile and fixed sites for sensors and C2
- Shared, co-ordinated area picture
- Configurable fixed or mobile areas for alert and alarm
- Track history, route prediction and behaviour monitoring
- Identification, evaluation and prioritising potential threats
- Distance, speed, time and heading calculations for timely and appropriate responses
- Configurable security levels
- Definable action and response recommendations - security level dependant
- Upgrade path including swimmer detection and aerial threat monitoring
- Can be integrated with existing sensor systems

## BENEFITS

- Significantly enhances security
- Gives valuable extra time to decide the most appropriate response
- Brings clarity to the area picture and a common understanding of activity
- Supports co-ordination of the most appropriate response
- Increases efficiency and effectiveness through automated monitoring of critical areas and assets
- Helps efficient allocation of available security assets
- Enables full area coverage using minimal manpower
- Easy to upgrade - sustained capability with minimal cost



## FOR MORE INFORMATION CONTACT:

BAE Systems Integrated System Technologies Limited  
Victory Point  
Lyon Way, Frimley, Camberley  
Surrey, GU16 7EX, United Kingdom  
Telephone +44 (0) 1276 603000  
Fax +44 (0) 1276 603001  
email [insyte@baesystems.com](mailto:insyte@baesystems.com)  
[www.baesystems.com/insyte](http://www.baesystems.com/insyte)

Copyright © BAE SYSTEMS 2006. All rights reserved.

This publication is issued to provide outline information only which (unless agreed by BAE SYSTEMS in writing) may not be used, applied or reproduced for any purpose, or form part of any order or contract or be regarded as a representation relating to the products or services concerned. BAE SYSTEMS reserves the right to alter without notice the specification, design, price or conditions of supply of any product or service.

06.06.Insyte.BC049506