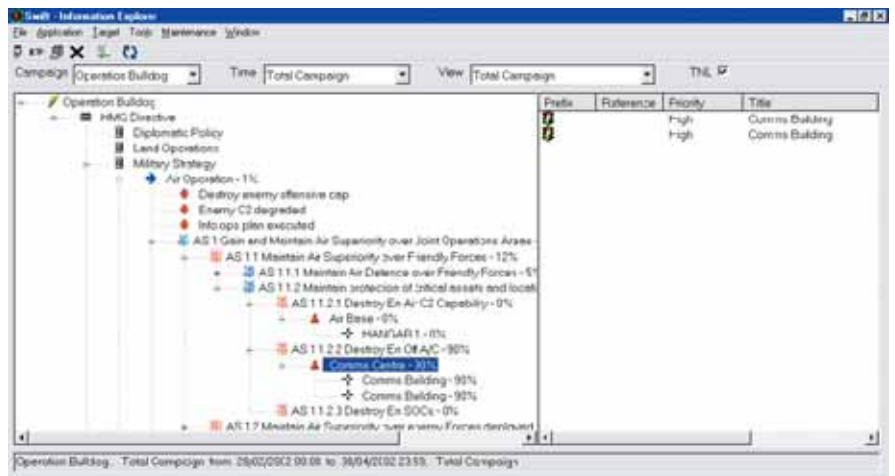


SWIFT Campaign Strategy Manager

SWIFT is a joint-force, multi-level information management system and campaign planning tool. It provides campaign commanders and planners with a direct, auditable link between the political and military strategic objectives and the nominated targets by providing links into target folders and combat assessment databases. It ensures efficient target nomination and effective tracking of campaign progress.



SWIFT provides the campaign commander with the following benefits:

- Reduces risk to personnel and equipment and potentially leads to a reduction in the overall campaign time and cost
- Reduces planning time
- Enables clear understanding of the different elements of the campaign's strategic and tactical objectives
- Provides tools to measure the campaign progress
- Gives insight into when objectives have been met and improves the process of deciding when to move to the next phase of the campaign

SWIFT has been developed to fully reflect the current western military doctrine. SWIFT's multi-level access allows near real-time visibility of the campaign plan at all levels.

Campaign visualisation

SWIFT enables the commander to visualise the campaign as a cascading tree structure or as an interactive GANTT chart, both showing the rate of

progress against each objective together with an aggregated view of the progress of higher level objectives. The GANTT view also shows dependencies between objectives thereby helping to visualise the dependant phases of the campaign.

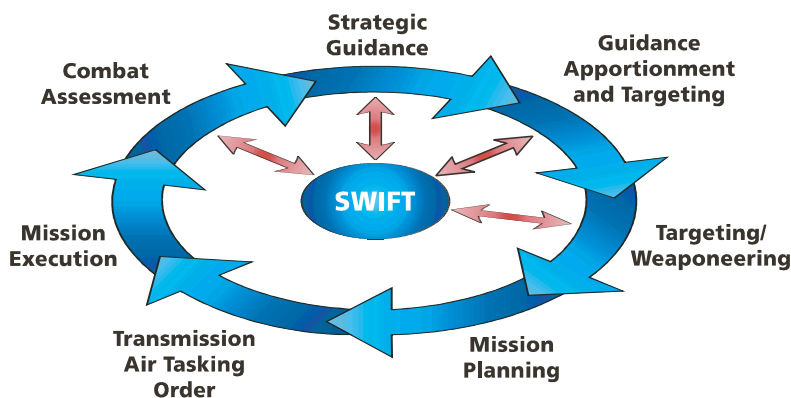
All views of the campaign can be tailored to suit local needs, visualising the whole campaign or a specific phase such as a 24hr air tasking order.

SWIFT also stores the political directives, centres of gravity and the output of the estimate process for reference during the strategic planning phases at the component command level.

Accountability

SWIFT provides an easily identifiable audit trail leading from the top-level political or military directives down to the smallest tactical task. The integrity of the audit trail is maintained by regular and automatic archiving of the plan to protected storage in a central relational database with controlled access. Third party archive data mining tools allow the data to be used for campaign analysis.





Web enabled

The use of web technology and COTS packages within the Windows NT environment reduces integration risk and enables near real-time access to the plan by multiple users. Additionally, a web enabled SWIFT can be used to support the distribution of targeting data such as imagery by providing linked access to existing target imagery libraries.

Risk reduction

Effective monitoring of campaign progress through links to the target weightings and combat assessment allows more effective judgement of the campaign progress, thus reducing wastage of valuable and expensive resources and reducing risk to personnel and equipment.

Support to targeting

Successful measurement of the campaign progress is dependent upon the availability of target weightings and accurate and comprehensive combat assessment information. SWIFT uses this information as the basis for its calculation of the rate of progress of the campaign and can be tailored to access individual units targeting folders

and combat assessment results. Alternatively, this information can be input manually into SWIFT's own database.

SWIFT uses Geographic Information Systems (GIS) tools to display target location information in a variety of forms to aid and simplify the target selection process. The target list in its various forms can be imported and viewed graphically, showing targets individually, by component nomination or by dependency upon other targets. Final output is the daily target nomination list for approval and export into mission planning and tasking packages.

During the targeting planning phase, targeting information and imagery can be passed to subordinate units through links to established target libraries.

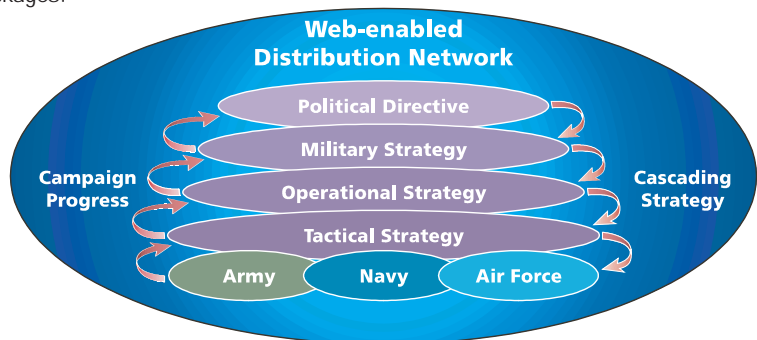
Nodal analysis tools allow the development of local target systems to suit particular campaign requirements. Dynamic interaction with these map tools through interactive, wall-mounted displays can aid the target selection process during the guidance apportionment and targeting phase of the planning process. Target imagery can be accessed directly from the map displays.

Briefing material

Many hours of valuable planning time are often lost in the preparation of briefing material. SWIFT is configured to automatically produce Microsoft PowerPoint slides based upon preprepared formats tailored to the individual organisation's needs. This material can then be made available on the web server.

Scenario analysis

SWIFT can be used for the evaluation of effects of various scenarios on the overall campaign in terms of time and effectiveness and if linked to resource allocation tools can help to identify the most cost-effective and lowest risk plan.



FOR MORE INFORMATION CONTACT:

BAE Systems Integrated System Technologies Limited
 Victory Point
 Lyon Way, Frimley, Camberley
 Surrey, GU16 7EX, United Kingdom
 Telephone +44 (0) 1276 603000
 Fax +44 (0) 1276 603001
 email insyte@baesystems.com
 www.baesystems.com/insyte

Copyright © BAE SYSTEMS 2006. All rights reserved.

This publication is issued to provide outline information only which (unless agreed by BAE SYSTEMS in writing) may not be used, applied or reproduced for any purpose, or form part of any order or contract or be regarded as a representation relating to the products or services concerned. BAE SYSTEMS reserves the right to alter without notice the specification, design, price or conditions of supply of any product or service.

06.06.Insyte.BC055306